



Advancing Climate Action Through Standards and Accreditation

Dr. John McGraw | Dr. Myles Sergeant | Dr. Maya Kalogirou



Advancing Climate Action | Activity Table

Time	Activity	Speaker(s)	Objective
5 minutes	Introduction	All	Understand the objectives of the session
10 minutes	Icebreaker Questions	All	Understand the current state of knowledge amongst participants regarding climate change and health care
10 minutes	Role of Standards and Accreditation	Dr. John McGraw	Learn about the role that standards and accreditation can play in advancing climate action
20 minutes	Climate Change and Health Care	Dr. Myles Sergeant	Learn about the impact of climate change on healthcare and the vision for an environmentally sustainable, net-zero, and climate-resilient health system
		Dr. Maya Kalogirou	
30 minutes	Breakout Session	All	Understand the current-state and emerging priorities for advancing climate action in health care
15 minutes	Ask Me Anything	All	Ask the presenters any questions about climate change and healthcare



Please have your device ready to participate!

Once you have logged in, keep in the screen open to access the next question.





Get Ready! | Questions Coming

Keep your device handy to participate!

- Use the QR code to log into Slido
- Once you have logged in, keep the screen open to access and answer questions as they appear on the screen
- Answers will appear in real time for engaging discussion about your climate action needs





Today's Objectives | Collaboration is Key

1. Introduce the new Climate Action Benchmarking Tool
2. Learn about climate initiatives your organization practices
3. Gather your feedback to improve the tool during the pilot stage

Your input will directly feed into the pilot program, currently running, and shape the direction of the tool to have significant impact across Canada and beyond.





Dr. John McGraw

Executive Vice President,
Products and Strategic Offerings

HSO & Accreditation Canada



Dr. Myles Sergeant

Executive Director, Canadian Coalition
for Green Health Care

Department of Family Medicine,
McMaster University

Co-lead, PEACH Health Ontario



Dr. Maya Kalogirou

President,
Canadian Association of Nurses
for the Environment



1,000+

subject matter experts

40+

countries

14,000+

locations using our programs

About Us | People Powered Health



Health Standards Organization (HSO) is the only health and social services Standard Development Organizations (SDO) in Canada developing National Standard of Canada.

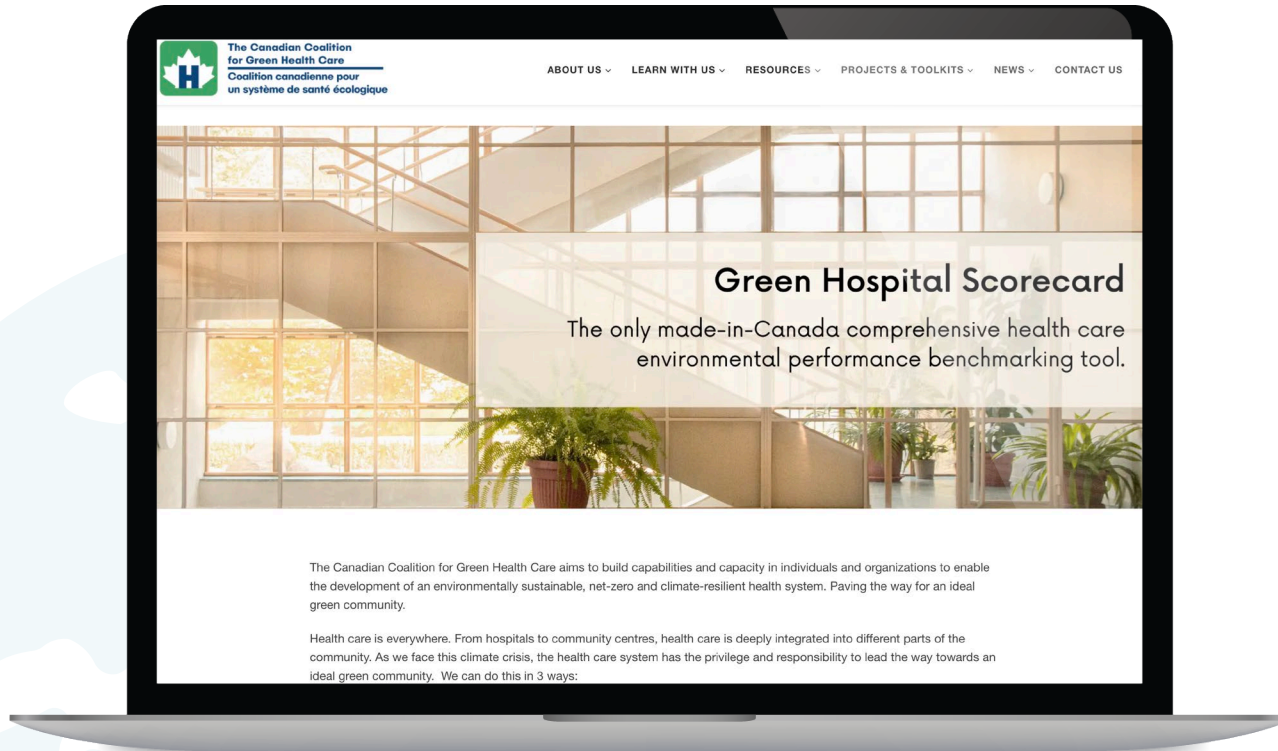


**ACCREDITATION
AGRÉMENT**
CANADA

Accreditation Canada delivers innovative assessment programs based on national and global standards.



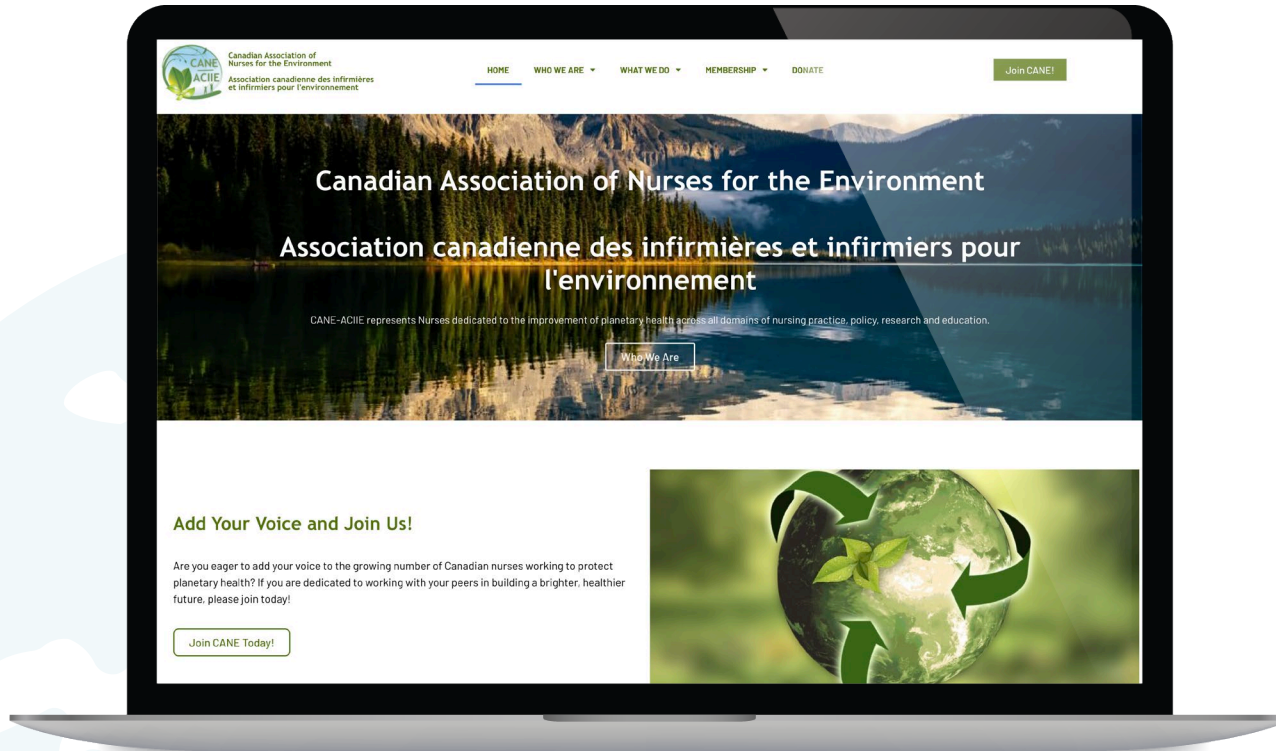
The Canadian Coalition for Green Health Care (CCGHC)



For over 20 years the Canadian Coalition for Green Health Care has been helping those working in health care facilities, non-governmental and governmental organisations, individuals, students and businesses to share green health care best practices and to become better equipped to deal with the growing demands placed upon them to be environmentally responsible health service workers and individuals.



The Canadian Association of Nurses for the Environment (CANE)



The Canadian Association of Nurses for the Environment (CANE) is a part of the Canadian Nurses Association's (CNA) Network of Nursing Specialties.

We represent Canadian nurses who are dedicated to the improvement of planetary health.

Climate Action Strategy | Addressing Current and Future Effects of Climate Change



Climate Change Mitigation

Enabling actions to reduce or prevent greenhouse gas emissions from human activities (e.g., deprescribing, investments in primary and community care and virtual health)

Cost Reduction, Efficiency and Quality



Climate Resiliency and Adaptation

Supporting the capacity of health systems to anticipate, respond to, cope with, recover from, and adapting to climate-related shocks and stresses

Safety, Continuity of services, and health equity



Disaster Risk Reduction and Recovery

Restoring or improving the livelihoods and health of people who live in a disaster-affected community

Restoration after Perturbation getting people back to lives

1. World Health Organization. (2022). Measuring the climate resiliency of health systems. World Health Organization. <https://iris.who.int/bitstream/handle/10665/354542/9789240048102-eng.pdf?sequence=1>
2. UNDRR (2015). Sendai Framework. <https://www.undrr.org/implementing-sendai-framework/what-sendai-framework>
3. ILO (2019). "The future of work in the health sector", Working Paper, No. 325, International Labour Office, Geneva, https://www.ilo.org/sector/Resources/publications/WCMS_669363/.



Climate Action Approach | Addressing Challenges



Impact



Measurement

Determine what to focus on based on priority and need



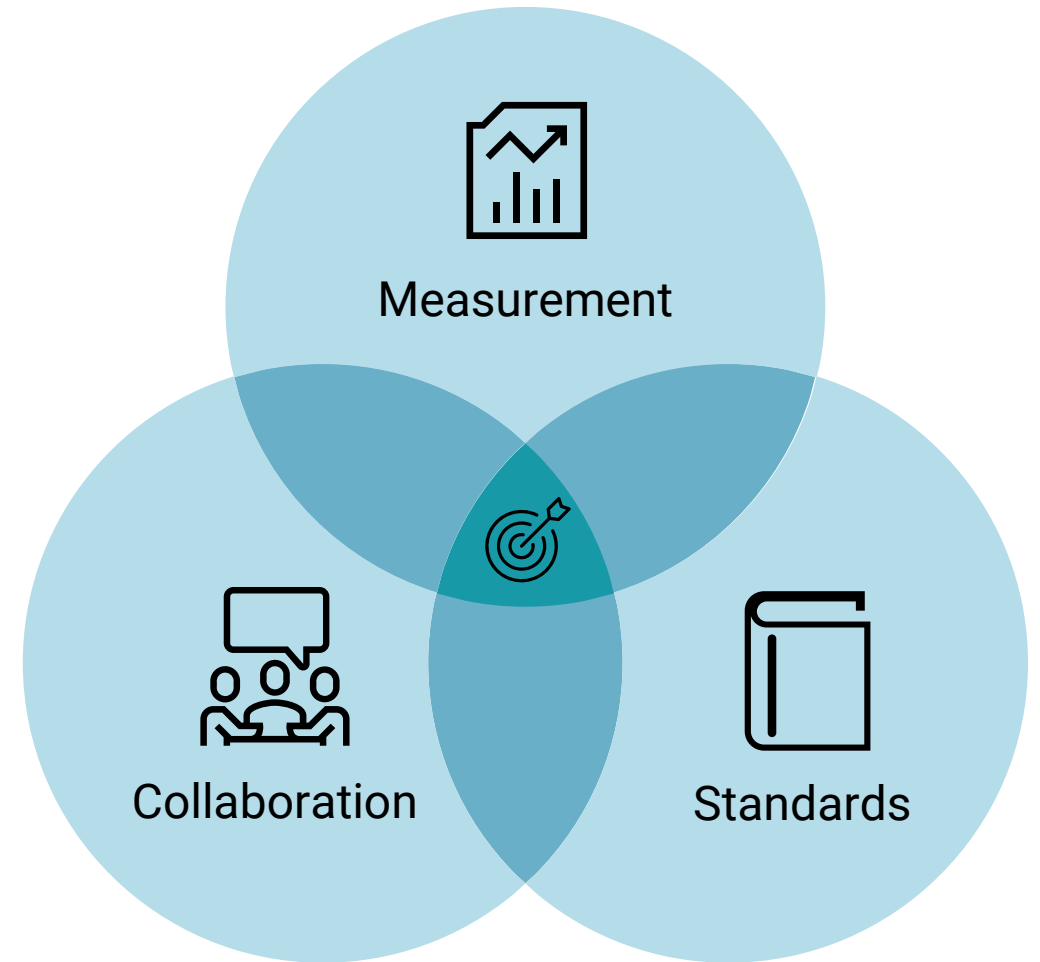
Standards

Helping to inform measurement tools, and when accredited ideally pre-fill measurement tool



Collaboration

Work with groups for leadership and content



Climate Action Approach | Collaboration

April 2025: HSO Announced Partnership with Canadian Coalition for Green health Care

- The Canadian Coalition for Green health Care is Canada's largest green health care organization
- 25 years of experience in greening health care

January 2025: HSO Assembles a Climate Action Advisory Committee

- Made up of 16 experts from across Canada

Next Steps: Additional collaborations



HSO Climate Action Advisory Committee



Dr. Myles Sergeant (co-chair)
Executive Director,
Canadian Coalition for Green Health Care



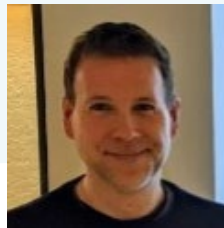
Vishal Jain (co-chair)
Director, Health Equity,
Health Standards Organization



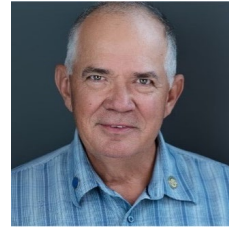
Linda Varangu (advisor)
Senior Advisor, Climate Change,
Canadian Coalition for Green
Health Care



Dr. Sherilee Harper
Canada Research Chair in
Climate Change and Health



Darryl Quantz
Planetary Health Lead,
Fraser Health Authority, BC



Robert Barss
Manager of Environmental
Stewardship
Nova Scotia Health



Dr. Sarah Henderson
Scientific director of
Environmental Health Services,
BCCDC and NCCEH



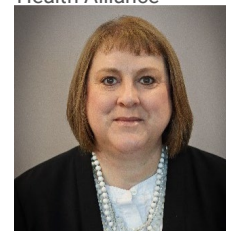
Caitlin Roy
Clinical Support Pharmacist,
Saskatchewan Health
Authority



Vincent Boisvert
Senior Sustainability Advisor,
CIUSSS-du-nord-de-l'île-de-
Montréal



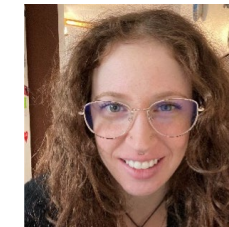
Dr. Courtney Howard
Emergency Physician, Yellowknives
Dene Territory
Vice-Chair, Global Climate and
Health Alliance



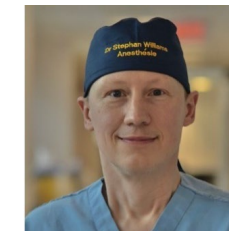
Julie Weir
Assistant Teaching Professor,
University of New Brunswick in
the Faculty of Nursing



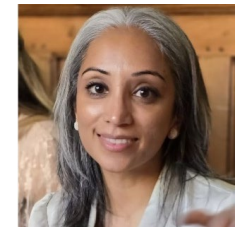
Dr. Ming-Ka Chan
Pediatrician,
Keewatinohk Inniniw
Minoayawin Inc.



Dr. Maya Kalogirou
President, CANE



Dr. Stephan Williams
Anesthesiologist and Medical Co-Manager for
Carbon-neutrality and Sustainability, Centre
hospitalier de l'Université de Montréal (CHUM)



Dr. Bhavini Gohel
Clinical Associate professor,
Cumming School of Medicine,
University of Calgary



Karen Langstaff
Vice President Redevelopment,
Corporate Support Services
and Chief Sustainability
Officer, St. Joseph's Health
care Hamilton

Climate Action Benchmarking Tool | Overview

Announced on April 22, 2025

Not a mandatory program for Qmentum Global™ and **will not** affect accreditation

Integrates into our current and future offerings

Provides **option** for organizations that want to affect change

English (United States)

Environmental Benchmarking Tool User Testing Application

Following the release of Health Standards Organization's (HSO) Declaration on Climate Action in January 2025, HSO and Accreditation Canada (AC) are partnering with the Canadian Coalition for Green Health Care (CCGHCC) to offer hospitals an opportunity to use-test a new environmental benchmarking tool based on the CCGHCC's Green Hospital Scorecard. All hospitals are encouraged to apply to participate in the user testing, which will take place in June/July 2025. A select number of hospitals will be chosen from across Canada to complete the benchmarking tool and provide their feedback. Applications are open until May 22, 2025. Your responses will be kept confidential and will not be shared with any third-parties.

* Required

1. Primary contact name: *
Enter your answer
2. Primary contact email address: *
Enter your answer
3. Hospital name *
Enter your answer
4. Hospital address: *
Enter your answer
5. What is your hospital's annual operating budget? *
Enter your answer
6. What is your hospital's total number of beds? *
Enter your answer
7. Is your site an academic/teaching hospital? *
☐ Yes
☐ No



Climate Action Benchmarking Tool | Development

Email us with questions, feedback, or interest in participating in shaping the tool



45 Hospitals applied to pilot the benchmarking tool



Interested sites range from small hospitals to large health systems

Hospital/System representation from the **Prairies**, **Ontario**, **Quebec** and **Atlantic Canada**





Which hospital/organization are you joining from?



In one or two words describe your role in your hospital/organization

Climate Action Approach | Addressing Challenges



Impact



Measurement

Determine what to focus on based on priority and need



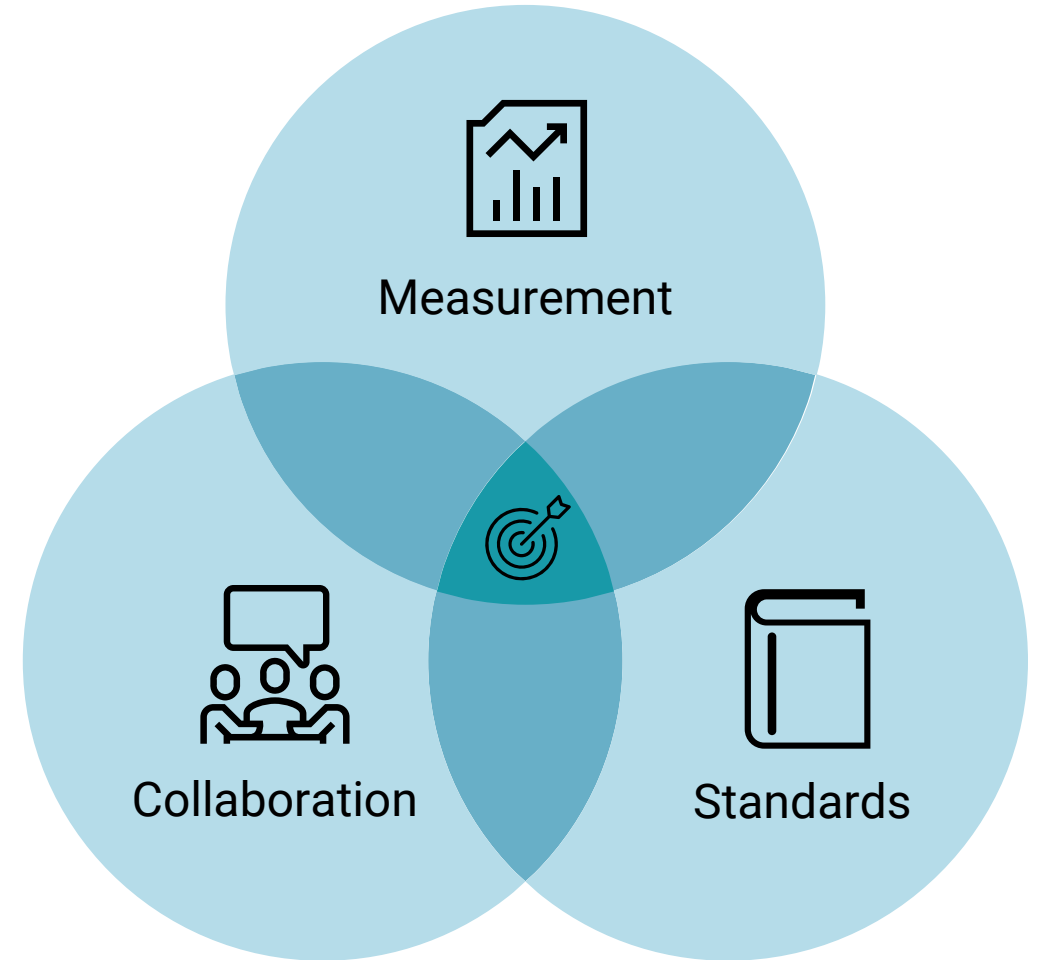
Standards

Helping to inform measurement tools, and when accredited ideally pre-fill measurement tool



Collaboration

Work with groups for leadership and content



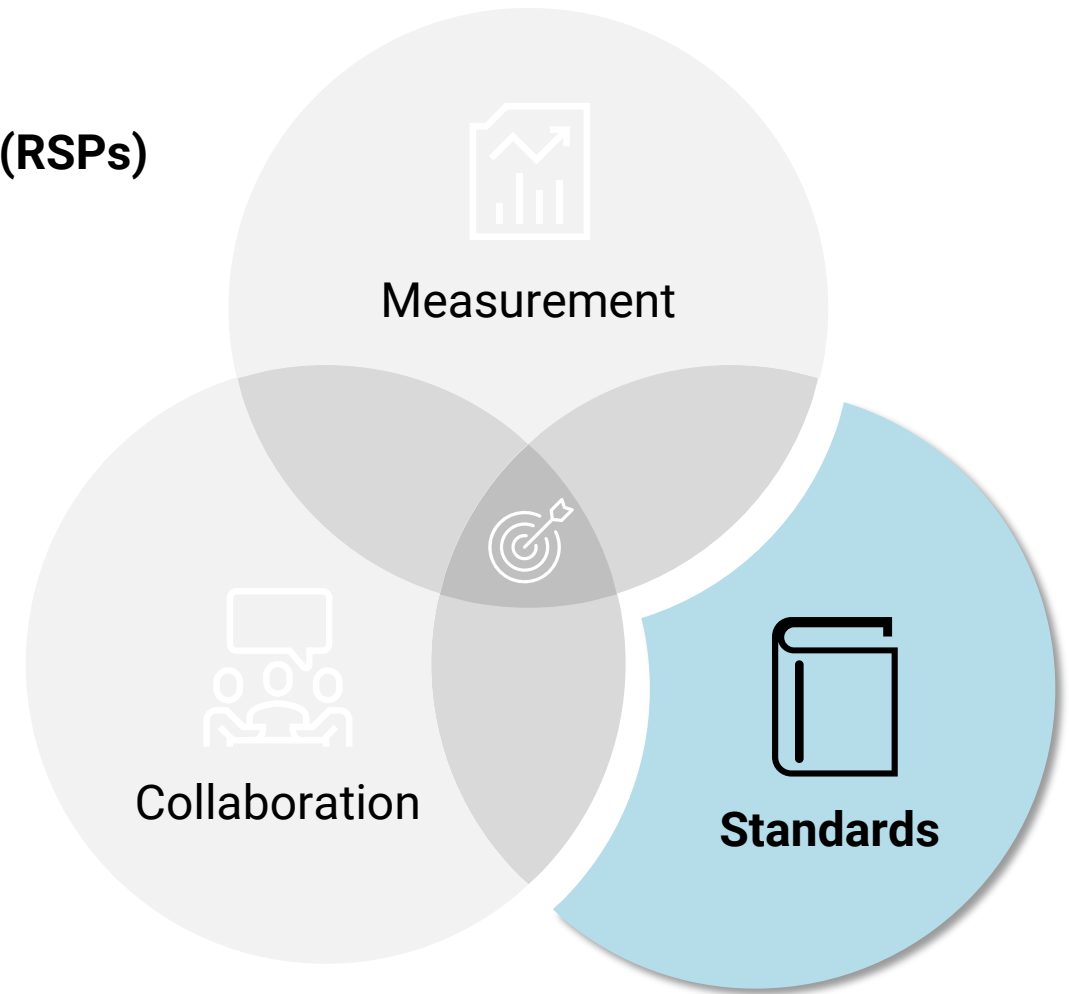
Climate Action Approach | Standards

April 2025: Introduction of Required Safety Practices (RSPs)

1. Reduced overall number of RSPs
2. Focuses on patient and workforce safety with measuring and monitoring
3. Incorporates green initiatives and practices e.g., deprescribing

Updating Standards

1. Focuses on patient and workforce safety, client resilience
2. Incorporates green initiatives and practices



Climate Action Approach | Alignment



Subscribe to our mailing list to be notified when a standard is available for **Public Review**

Climate Action Benchmarking Tool	Aligned HSO Standards and RSPs
1. Corporate Leadership and Governance	<ul style="list-style-type: none">• Leadership Standard• Governance Standard
2. Climate Change and Resiliency	<ul style="list-style-type: none">• Leadership Standard• Climate Resiliency, Emergency and Disaster Preparedness Standard (2026)
3. Education	<ul style="list-style-type: none">• Leadership Standard
4. Supply Chain	<ul style="list-style-type: none">• Leadership Standard• Infection Prevention and Control Standard (Public Review – July 2025)• Safe Use of Medical Devices and Equipment RSP
5. Clinical Practices	<ul style="list-style-type: none">• Leadership Standard• Infection Prevention and Control Standard (Public Review – July 2025)• Virtual Care Standard• Home Care Standard
6. Medications and Anesthetics	<ul style="list-style-type: none">• Medication Management Standard (Public Review – June 2025)• Antimicrobial Stewardship RSP• Opioid Stewardship RSP
12. System Design	<ul style="list-style-type: none">• Client Flow RSP• Safe Transitions RSP



Climate Action Approach | Standards



Subscribe to our mailing list to be notified when a standard is available for Public Review



Environmental Sustainability:

2 | Planning and Designing Services

- 2.7** The organization manages sustainability, reduces its impact on the environment, and is prepared to respond to environmental changes.

Deprescribing:

6 | Prescribing and Ordering Medications

- 6.1.7** The organizational leaders maintain a deprescribing program to optimize appropriate medication use for the population served.

Guideline

The deprescribing program enhances client safety by systematically reducing unnecessary medications, decreasing the risks of side effects, medication interactions, and antimicrobial resistance.

The program promotes environmental stewardship by reducing unnecessary pharmaceutical use, minimizing potential contamination, and preventing ecological harm from medications entering water systems.

Reducing inappropriate use of antipsychotic medications and polypharmacy in older adults and clients living with dementia can decrease risks related to functional decline, immobilization, medication interactions, and falls.

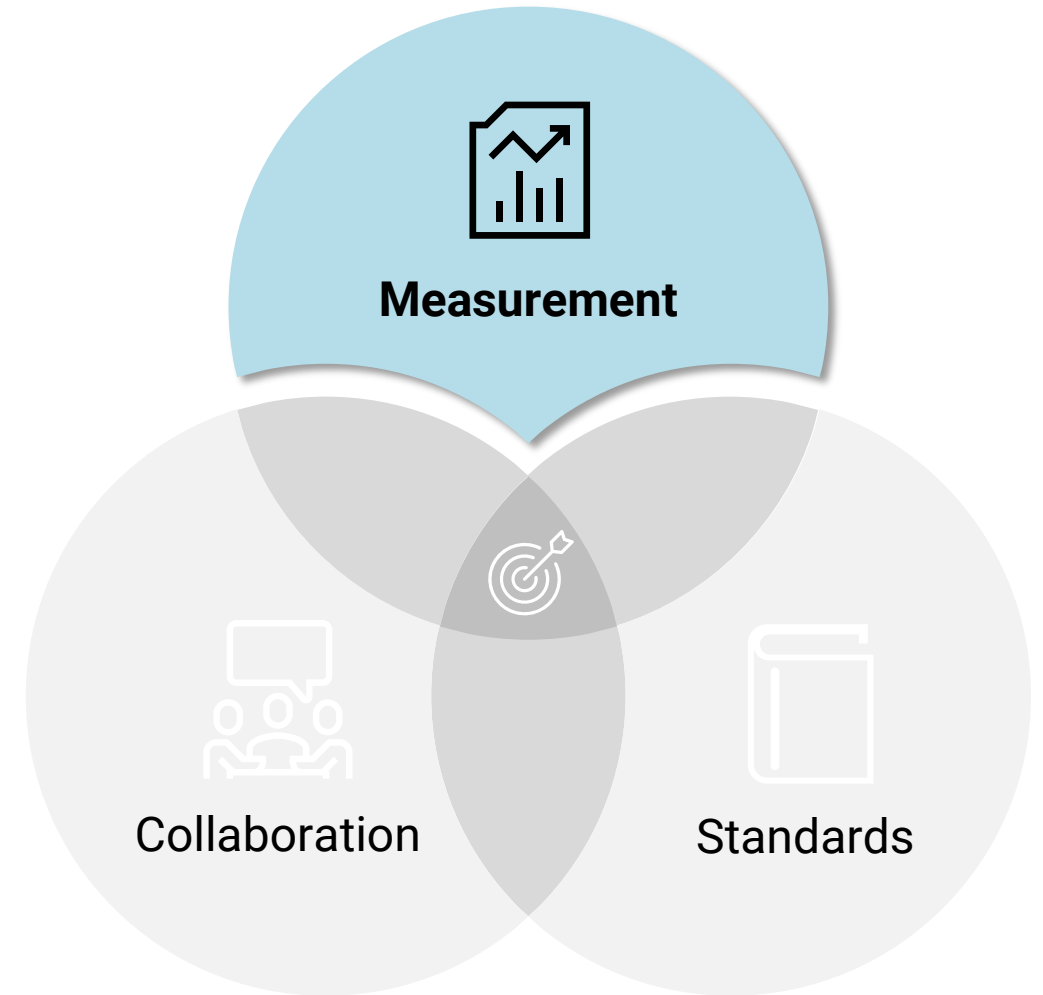
- 6.1.8** The clinical team evaluates the effectiveness of the deprescribing program as part of the organizational continuous quality improvement plan.



Climate Action Approach | Measurement

Updated Green Hospital Scorecard: Sections

1. Corporate Leadership and Governance (7 the Qs)
2. Climate Change and Resiliency (5 Qs)
3. Education (2 Qs)
4. Supply Chain (2 Qs)
5. Clinical Practices (8 Qs)
6. Medications and Anesthetics (7 Qs)
7. Buildings – Energy, Waste, Water (12 Qs)
8. Food (5 Qs)
9. Transportation (2 Qs)
10. System Design (1 Q)



Climate Action Benchmarking Tool | Pilot



Choice

Make choices based on resources, time, and status from the board room to the waiting room



Visibility

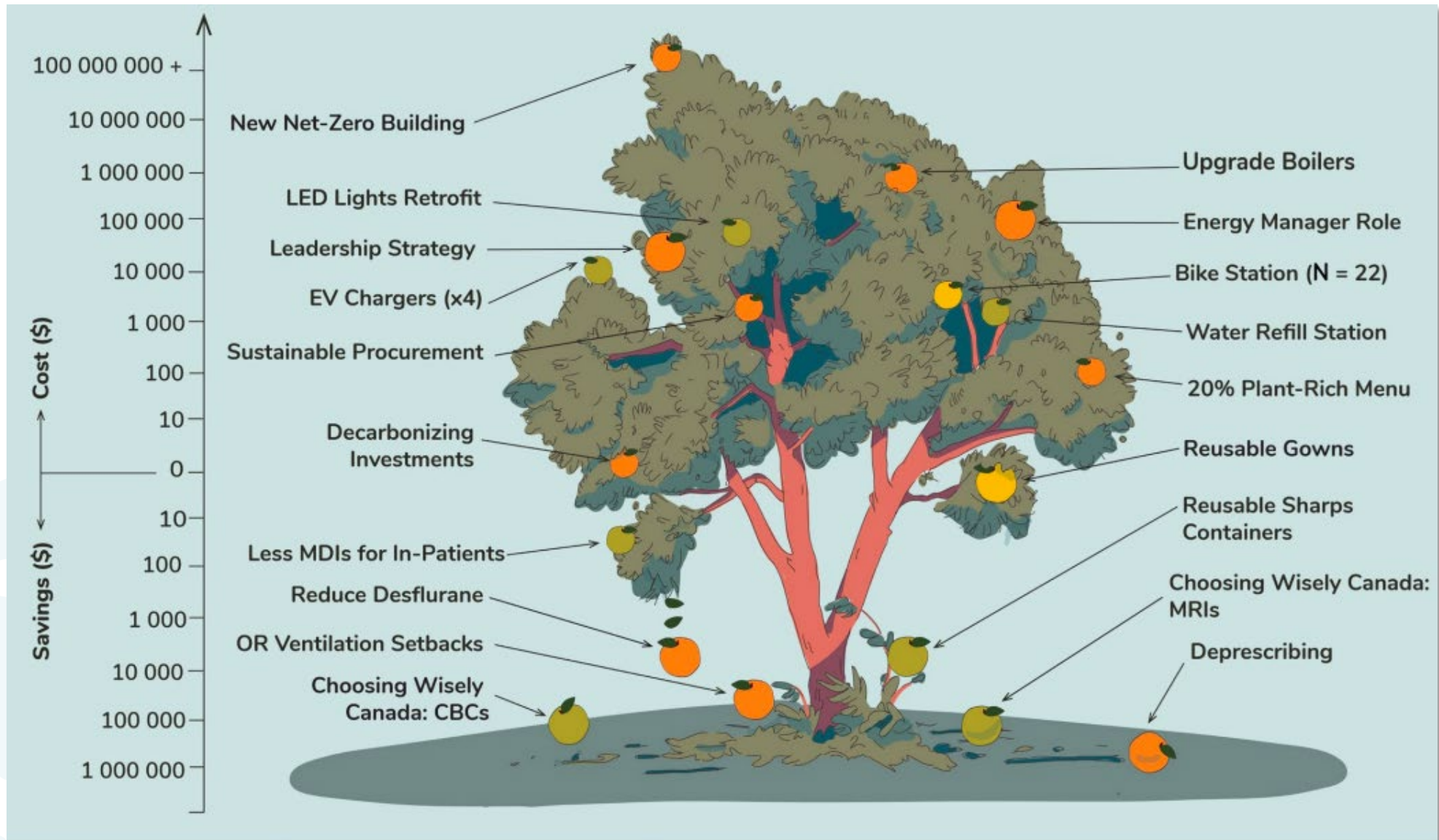
Use benchmarking metrics to compare progress with peers in the industry



Impact

Analyze metrics on patient safety, green, and cost savings to curate your journey and create impact





Low Hanging PEACH Tree

Financial ROI

- Immediate (<1 year)
- Delayed or No ROI

GHG Savings

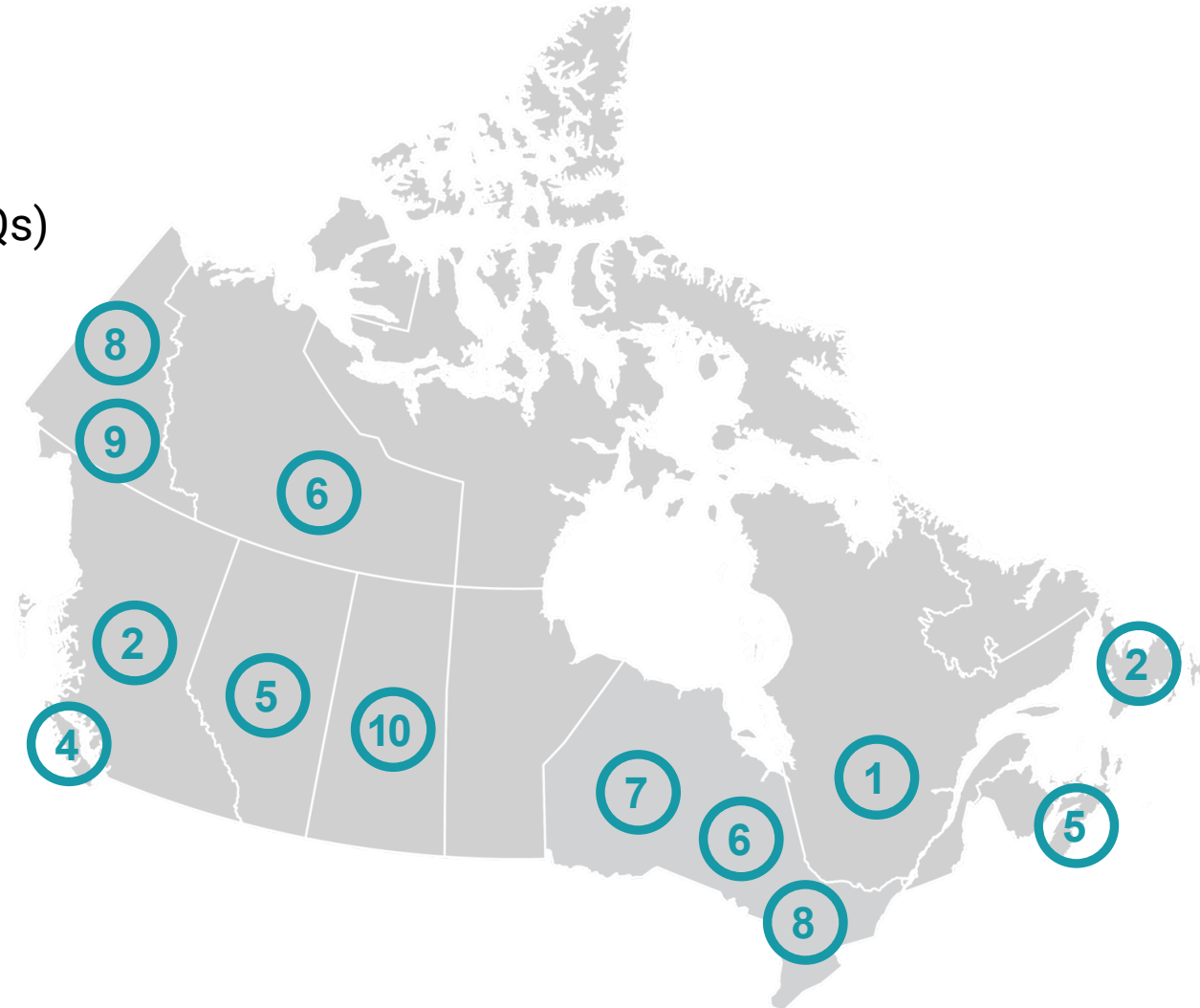
- Game Changers** (>100 Tonnes CO₂)
- Difference Makers** (>50 Tonnes CO₂)
- Needle Nudgers** (>0.5 Tonnes CO₂)



Climate Action Benchmarking Tool | Across Canada

Updated Green Hospital Scorecard: Sections

1. Corporate Leadership and Governance (7 the Qs)
2. Climate Change and Resiliency (5 Qs)
3. Education (2 Qs)
4. Supply Chain (2 Qs)
5. Clinical Practices (8 Qs)
6. Medications and Anesthetics (7 Qs)
7. Buildings – Energy, Waste, Water (12 Qs)
8. Food (5 Qs)
9. Transportation (2 Qs)
10. System Design (1 Q)





Get Ready! | Questions Coming



Keep your device ready to participate!

Once you have logged in, keep in the screen open to access the next question.



Think about how these examples would apply to your organization

For each example, think about ways in which the tool can drive climate action change from a:

1. Leadership level
2. Direct care level

Later, we will break out into group to discuss.



Climate Action Benchmarking Tool | Proposed Categories for Impact



Patient Safety



Cost Savings



Resiliency



Climate Action Benchmarking Tool | Example

Updated Green Hospital Scorecard: Sections

- 1. Corporate Leadership and Governance (7 the Qs)
- 2. Climate Change and Resiliency (5 Qs)
- 3. Education (2 Qs)
- 4. Supply Chain (2 Qs)
- 5. Clinical Practices (8 Qs)
- 6. Medications and Anesthetics (7 Qs)
- 7. Buildings – Energy, Waste, Water (12 Qs)
- 8. Food (5 Qs)
- 9. Transportation (2 Qs)
- 10. System Design (1 Q)

Climate Action Benchmarking Tool

General Information

Corporate Leadership and Governance

Climate Change and Resiliency

1. Corporate Leadership and Governance

Please note:

GHG = greenhouse gas

1.1 Does your hospital's strategic plan include a commitment to environmental sustainability and a net-zero emissions target?

☐ Not currently a consideration.

☐ No, but we are actively working on including environmental sustainability and net-zero emissions by 2050 in our strategic plan.

☒ Yes, we have a corporately recognized environmental mandate or commitment in our strategic plan.



Leadership | Centre hospitalier de l'Université de Montréal

Strategic Vision

To clearly define the actions to be taken, CHUM is implementing an action plan structured around six (6) strategic areas.

Each area is integrated into the clinical context of CHUM and CRCHUM research, with validation of its trajectory and regular evaluation of the directions taken to achieve carbon neutrality.

The plan outlined below also addresses the objectives and actions implemented by the MSSS in terms of sustainable development.

Area 1	Area 2	Area 3	Area 4	Area 5	Area 6
Energy	Responsible Procurement	Sustainable Food	Waste Materials	Sustainable Mobility	Responsible Digital Technology



Patient Safety



Cost Savings




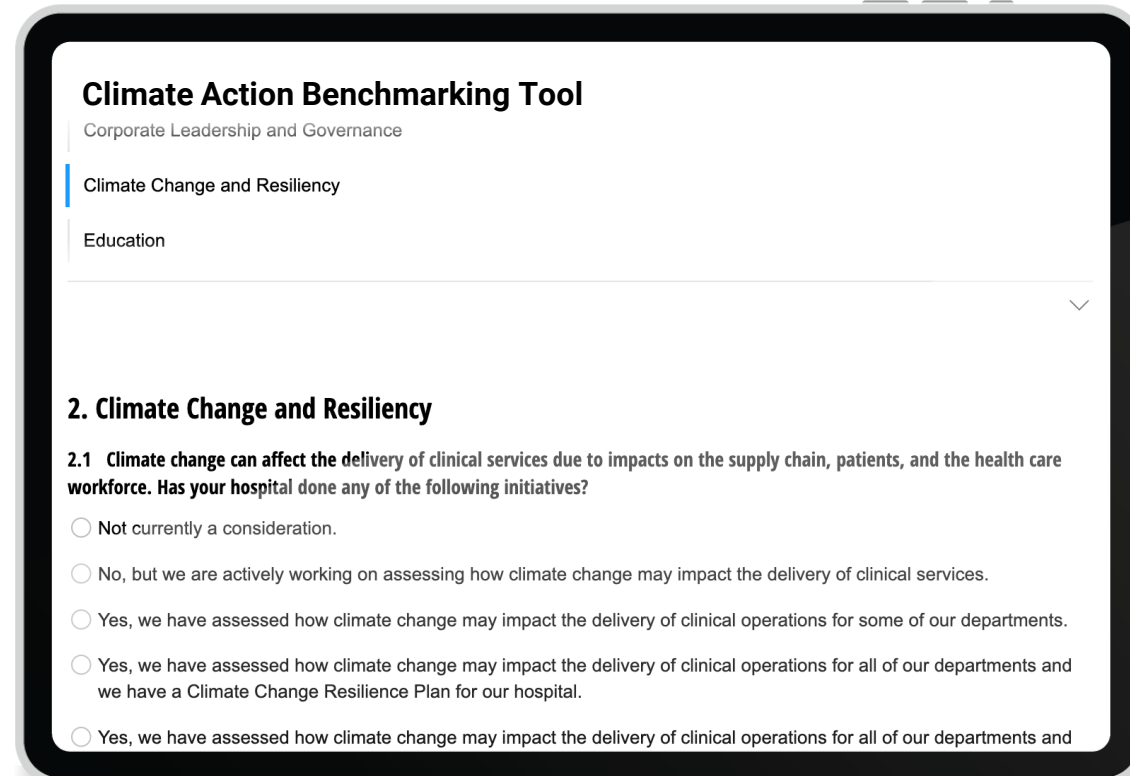
Resiliency



Climate Action Benchmarking Tool | Example

Updated Green Hospital Scorecard: Sections

1. Corporate Leadership and Governance (7 the Qs)
-  2. **Climate Change and Resiliency (5 Qs)**
3. Education (2 Qs)
4. Supply Chain (2 Qs)
5. Clinical Practices (8 Qs)
6. Medications and Anesthetics (7 Qs)
7. Buildings – Energy, Waste, Water (12 Qs)
8. Food (5 Qs)
9. Transportation (2 Qs)
10. System Design (1 Q)



Climate Action Benchmarking Tool

Corporate Leadership and Governance

Climate Change and Resiliency

Education

2. Climate Change and Resiliency

2.1 Climate change can affect the delivery of clinical services due to impacts on the supply chain, patients, and the health care workforce. Has your hospital done any of the following initiatives?

☐ Not currently a consideration.

☐ No, but we are actively working on assessing how climate change may impact the delivery of clinical services.

☐ Yes, we have assessed how climate change may impact the delivery of clinical operations for some of our departments.

☐ Yes, we have assessed how climate change may impact the delivery of clinical operations for all of our departments and we have a Climate Change Resilience Plan for our hospital.

☐ Yes, we have assessed how climate change may impact the delivery of clinical operations for all of our departments and



Climate Change and Resiliency | Newfoundland and Labrador

Health Facility Assessment

- Toolkit has three main sections with questions related to risk assessment, risk management, and building assessment.
- **Eight** health care facilities in the province were chosen for the assessment.
- Chosen based on:
 - Having representation from the five health zones – Central, Eastern-Rural, Eastern-Urban, Labrador-Grenfell, and Western;
 - Having representation from both urban and rural health centres, as well as a community clinic;
 - Having representation from facilities in coastal communities;
 - Having representation from areas with a higher population of Indigenous communities; and
 - The facilities condition index, which highlights the overall physical condition of a facility.



6



Patient Safety



Cost Savings



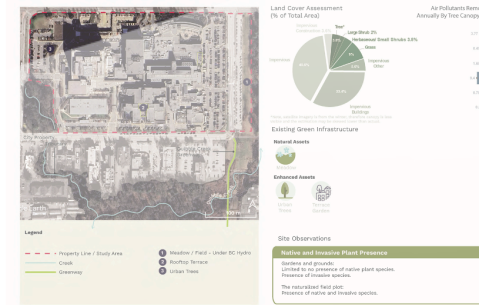
Resiliency



Climate Change and Resiliency | British Columbia

Enhancing the Natural Environment is part of FH Planetary Health Strategy

- Creation of a Natural Environment Working Group
- University of BC Sustainability Scholar Project
 - Site visits to 3 acute and 3 LTC
 - Landscape Analysis
 - Inventory of Natural Assets
 - Engagement with Indigenous Health, site leaders and planning next steps



Patient Safety



Cost Savings



Resiliency



Climate Action Benchmarking Tool | Example

Updated Green Hospital Scorecard: Sections

1. Corporate Leadership and Governance (7 the Qs)
2. Climate Change and Resiliency (5 Qs)
- 3. **Education (2 Qs)**
4. Supply Chain (2 Qs)
5. Clinical Practices (8 Qs)
6. Medications and Anesthetics (7 Qs)
7. Buildings – Energy, Waste, Water (12 Qs)
8. Food (5 Qs)
9. Transportation (2 Qs)
10. System Design (1 Q)

Climate Action Benchmarking Tool

Climate Change and Resiliency

Education

Supply Chain

3. Education

Please note:

HCW = health care worker

3.1 Do all health care workers in the health system, including leadership, clinical, facilities, administrative etc., receive general training on climate resilience and low-carbon sustainability?

☐ No.

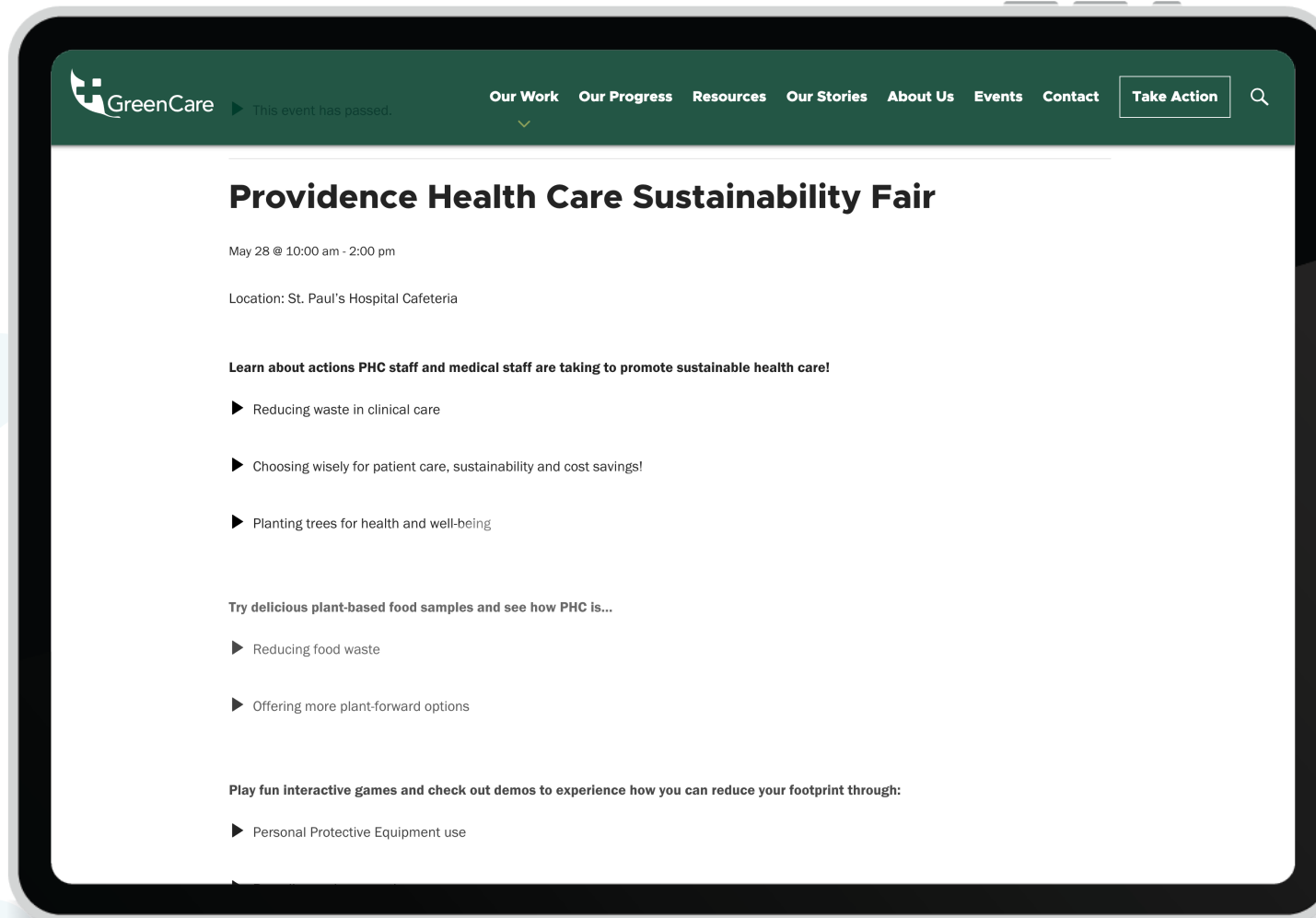
☐ No, but we are working on identifying available training programs for our HCWs.

☐ Yes, HCWs are made aware that training on climate resilience and low-carbon sustainability are available to them on a voluntary basis.

☐ Yes, both incoming and existing HCWs receive training on climate resilience and low-carbon sustainability.



Education | Green Care



Patient Safety



Cost Savings




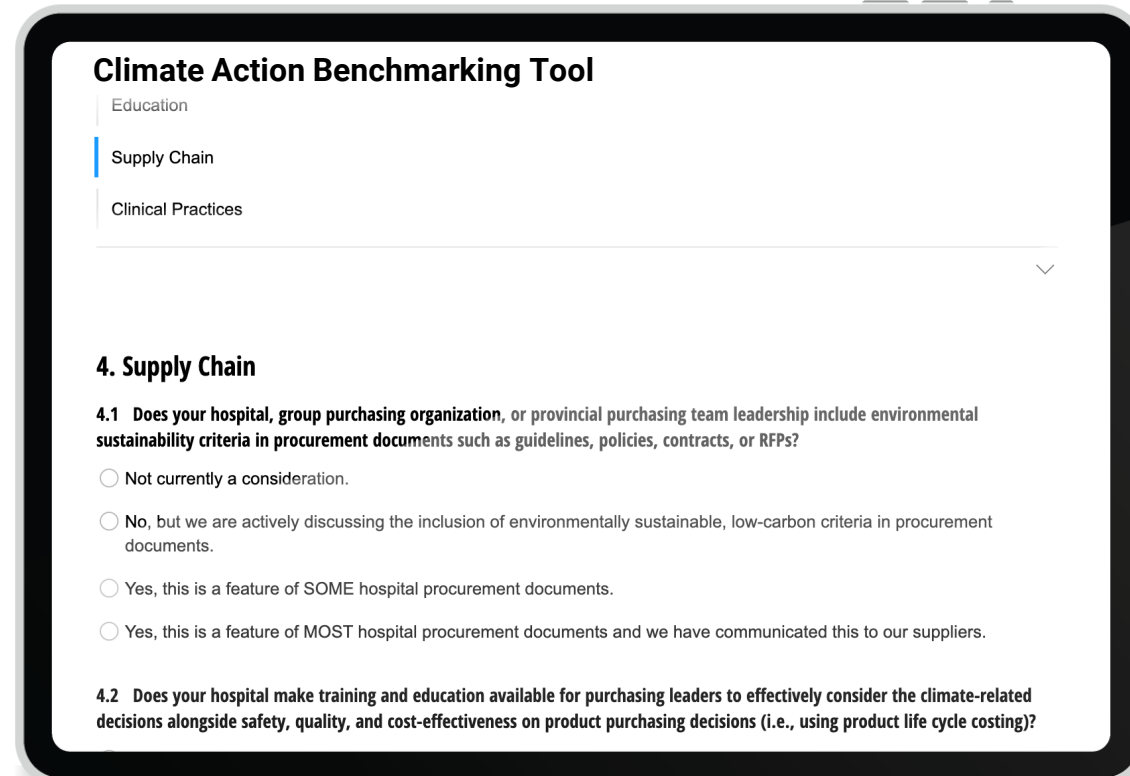
Resiliency



Climate Action Benchmarking Tool | Example

Updated Green Hospital Scorecard: Sections

1. Corporate Leadership and Governance (7 the Qs)
2. Climate Change and Resiliency (5 Qs)
3. Education (2 Qs)
-  4. **Supply Chain (2 Qs)**
5. Clinical Practices (8 Qs)
6. Medications and Anesthetics (7 Qs)
7. Buildings – Energy, Waste, Water (12 Qs)
8. Food (5 Qs)
9. Transportation (2 Qs)
10. System Design (1 Q)



Climate Action Benchmarking Tool

Education

Supply Chain

Clinical Practices

4. Supply Chain

4.1 Does your hospital, group purchasing organization, or provincial purchasing team leadership include environmental sustainability criteria in procurement documents such as guidelines, policies, contracts, or RFPs?

☐ Not currently a consideration.

☐ No, but we are actively discussing the inclusion of environmentally sustainable, low-carbon criteria in procurement documents.

☐ Yes, this is a feature of SOME hospital procurement documents.

☐ Yes, this is a feature of MOST hospital procurement documents and we have communicated this to our suppliers.

4.2 Does your hospital make training and education available for purchasing leaders to effectively consider the climate-related decisions alongside safety, quality, and cost-effectiveness on product purchasing decisions (i.e., using product life cycle costing)?



Supply Chain | Hamilton Health Sciences

As a first step, HHS has created RFP language related to sustainability and environmental impacts that have now been included in our tendering documents. This may include requests for information regarding our current and future vendor partners' practices and leadership on:

- Measuring and reducing our vendors' carbon footprint
- Waste management, water conservation, air pollution, and stewardship
- Environmental sustainability in design, packaging, and transportation
- Environmental sustainability of their own supply chain and partners
- Third-party verification, certification, or reporting documenting requested information

Sourcing and procurement process related to non-clinical categories such as office supplies, transportation, and technology-based products and services can offer a more flexible testing ground for healthcare organizations to trial new processes and templates.



Patient Safety



Cost Savings




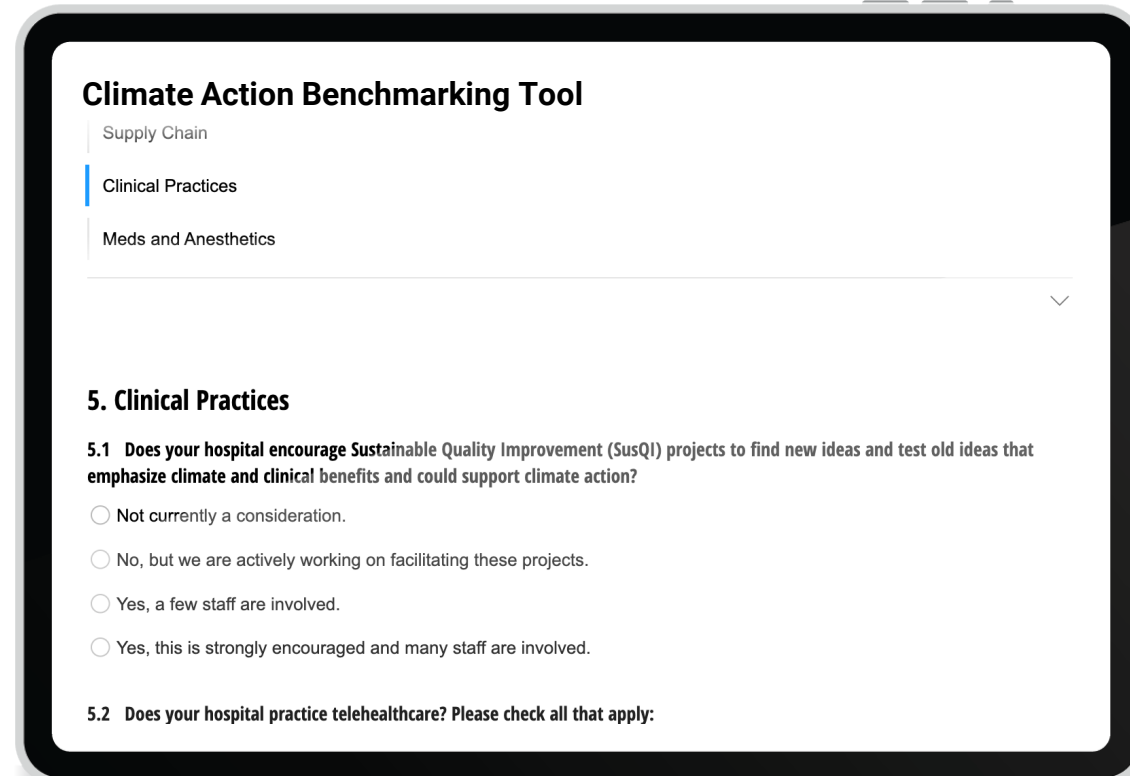
Resiliency



Climate Action Benchmarking Tool | Example

Updated Green Hospital Scorecard: Sections

1. Corporate Leadership and Governance (7 the Qs)
2. Climate Change and Resiliency (5 Qs)
3. Education (2 Qs)
4. Supply Chain (2 Qs)
-  5. **Clinical Practices (8 Qs)**
6. Medications and Anesthetics (7 Qs)
7. Buildings – Energy, Waste, Water (12 Qs)
8. Food (5 Qs)
9. Transportation (2 Qs)
10. System Design (1 Q)



Climate Action Benchmarking Tool

- Supply Chain
- Clinical Practices**
- Meds and Anesthetics

5. Clinical Practices

5.1 Does your hospital encourage Sustainable Quality Improvement (SusQI) projects to find new ideas and test old ideas that emphasize climate and clinical benefits and could support climate action?

☐ Not currently a consideration.

☐ No, but we are actively working on facilitating these projects.

☐ Yes, a few staff are involved.

☐ Yes, this is strongly encouraged and many staff are involved.

5.2 Does your hospital practice telehealthcare? Please check all that apply:



Clinical Practices | Alberta Health Services

Thinking Outside the Bag - Ketorolac IV Direct Administration at South Health Campus, Alberta Emergency Department



GREEN TEAM COMPETITION
CENTRE FOR SUSTAINABLE HEALTHCARE

Aim: To decrease resources (continuo-flo solution set, mini-bag, cleaning wipe and IV pump energy) required for IV administration of ketorolac in the Emergency Department by engaging staff and changing the default electronic ordering settings.

Outcome: The change has been successfully implemented. Projected savings are based on approximately 3,500 doses administered per year and an assumption that 100% of doses have been administered with the new method.



 Clinical	<ul style="list-style-type: none">• Patients receive pain medication quicker (time of medication order to administration reduced by 14%).• May reduce medication onset time by approximately 19 minutes (however onset pain relief was not specifically measured).
 Environmental	1,272 kgCO ₂ e per year, equivalent to driving 4,911 km in an average car.
 Financial	\$23,267 CAD per year
 Social	<ul style="list-style-type: none">• Nurses comfortable administering Ketorolac IV direct• 1,460 minutes (24 hours) of nursing time saved per month which can be redirected to higher value patient care activities.• Patients needs met without excessive supply usage and in a more timely manner• The elimination of an IV pole and pump improved patient experience and reduced sense of restriction on mobility.





Patient Safety



Cost Savings



Resiliency



Clinical Practices | Using Labs Wisely

About Using Labs Wisely

Using Labs Wisely is a national consortium of hospitals committed to making a measurable impact on reducing low-value lab testing in Canada. Hospitals of various sizes and levels of experience with implementing lab stewardship projects are welcome to join Using Labs Wisely.

Nova Scotia ²²

- Aberdeen Regional Health Centre
- Colchester East Hants Health Centre
- Cumberland Regional Health Care Centre
- IWK Nova Scotia
- Nova Scotia Health (Eastern Zone)
 - Cape Breton Hospital



Patient Safety



Cost Savings




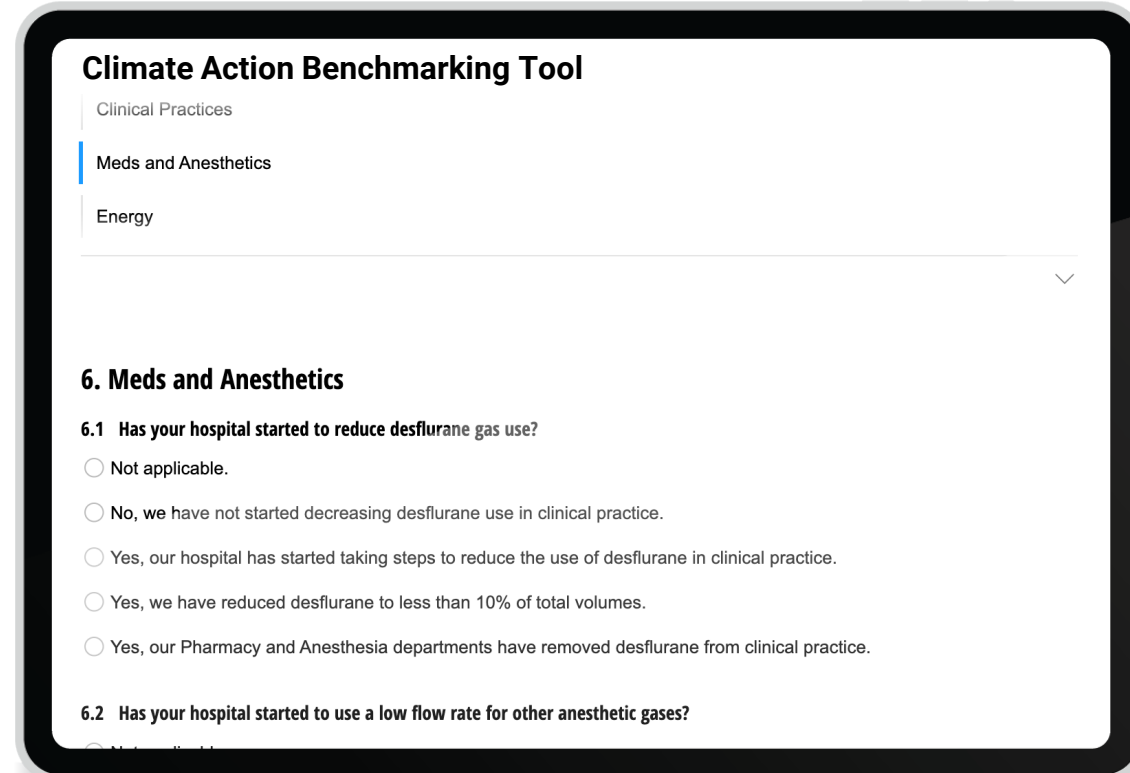
Resiliency



Climate Action Benchmarking Tool | Example

Updated Green Hospital Scorecard: Sections

1. Corporate Leadership and Governance (7 the Qs)
2. Climate Change and Resiliency (5 Qs)
3. Education (2 Qs)
4. Supply Chain (2 Qs)
5. Clinical Practices (8 Qs)
-  **6. Medications and Anesthetics (7 Qs)**
7. Buildings – Energy, Waste, Water (12 Qs)
8. Food (5 Qs)
9. Transportation (2 Qs)
10. System Design (1 Q)



Climate Action Benchmarking Tool

Clinical Practices

Meds and Anesthetics

Energy

6. Meds and Anesthetics

6.1 Has your hospital started to reduce desflurane gas use?

☐ Not applicable.

☐ No, we have not started decreasing desflurane use in clinical practice.

☐ Yes, our hospital has started taking steps to reduce the use of desflurane in clinical practice.

☐ Yes, we have reduced desflurane to less than 10% of total volumes.

☐ Yes, our Pharmacy and Anesthesia departments have removed desflurane from clinical practice.

6.2 Has your hospital started to use a low flow rate for other anesthetic gases?

☐ Not applicable.



Medications and Anesthetics | Northwest Territories Health System



Northwest Territories Medical Association

nwtmda@gmail.com

FOR IMMEDIATE RELEASE

January 7, 2025

Northwest Territories Health System Becomes First Jurisdiction in Canada to Phase out Super Polluting Anesthetic Gas Desflurane—Celebrates providing care without it for all of 2024.

Challenges Other Provinces and Territories to Make New Years Desflurane Phase Out Resolutions

Yellowknife, NT – The Northwest Territories did not use the super pollutant anesthetic gas Desflurane for the entire year of 2024, becoming the first jurisdiction in Canada to eliminate its use. Having evacuated its territorial hospital along with 19 communities and multiple health centers as a result of extreme wildfires in 2023, the health community feels it is important to lead by example in reducing the drivers of climate change—known to be the biggest threat to health and health systems of the 21st century. This move positions the Northwest Territories as a national leader in sustainable healthcare and aligns with the Government of the Northwest Territories' (GNWT) [Climate Change Strategic Framework](#) goal to reduce greenhouse gas emissions by 30% below 2005 levels by 2030.



Patient Safety



Cost Savings




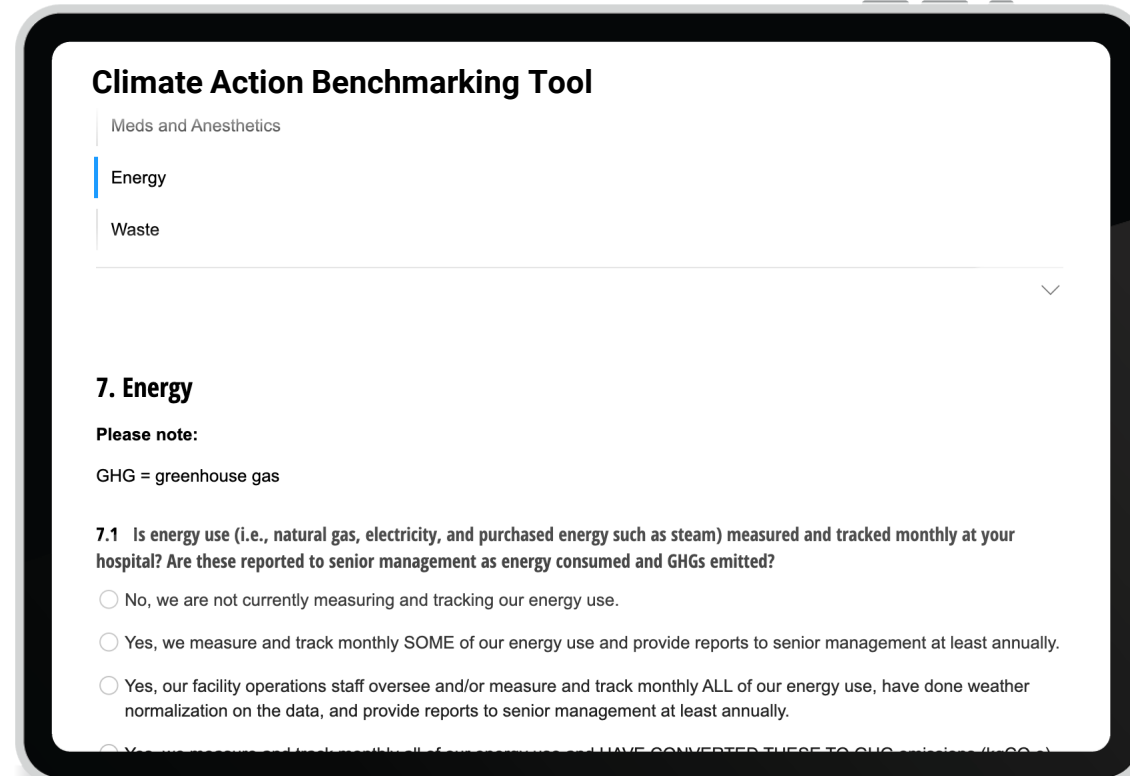
Resiliency



Climate Action Benchmarking Tool | Example

Updated Green Hospital Scorecard: Sections

1. Corporate Leadership and Governance (7 the Qs)
2. Climate Change and Resiliency (5 Qs)
3. Education (2 Qs)
4. Supply Chain (2 Qs)
5. Clinical Practices (8 Qs)
6. Medications and Anesthetics (7 Qs)
-  **7. Buildings – Energy, Waste, Water (12 Qs)**
8. Food (5 Qs)
9. Transportation (2 Qs)
10. System Design (1 Q)



Climate Action Benchmarking Tool

Meds and Anesthetics

Energy

Waste

7. Energy

Please note:

GHG = greenhouse gas

7.1 Is energy use (i.e., natural gas, electricity, and purchased energy such as steam) measured and tracked monthly at your hospital? Are these reported to senior management as energy consumed and GHGs emitted?

☐ No, we are not currently measuring and tracking our energy use.

☐ Yes, we measure and track monthly SOME of our energy use and provide reports to senior management at least annually.

☐ Yes, our facility operations staff oversee and/or measure and track monthly ALL of our energy use, have done weather normalization on the data, and provide reports to senior management at least annually.

☐ Yes, we measure and track monthly ALL of our energy use and HAVE CONVERTED THESE TO GHG emissions (tCO₂e)



Buildings | St. Joseph's Healthcare Hamilton

Planned Energy Saving Projects 2022-23

Description	Cost (\$)	Energy Savings	GHG Reduction (Tonnes)	Annual Cost Savings (\$)
Boiler Room Pipe/Valves and Equipment Insulation	24,985	2,800 GJ	136	20,000
Air Curtains for JT Entrance and Basement Corridor	24,999	700 GJ	34	5,000
JIT replacement of 400 Hot Water Control leaking Valves for Temperature Control	45,714	1,210 GJ	59	8,600
Luke Wing Control Valve to Reduce Air in System Domestic Cold Water	25,089	6,818 m3	Not Applicable	29,000
Replacement Approx. 20 Variable Frequency Drives (VFD) in JIT ducts to reduce motor use from 100% to as needed	90,000	54,500 kWh	2	6,270
Install a Capacitor Bank to Reduce electricity waste	40,000	149,500 kWh	5	17,200
Change Chilled Water Temperature based on Outdoor Air Temperature		260,000 kWh	8	29,900
Total	250,787		243	\$115,970



Patient Safety



Cost Savings




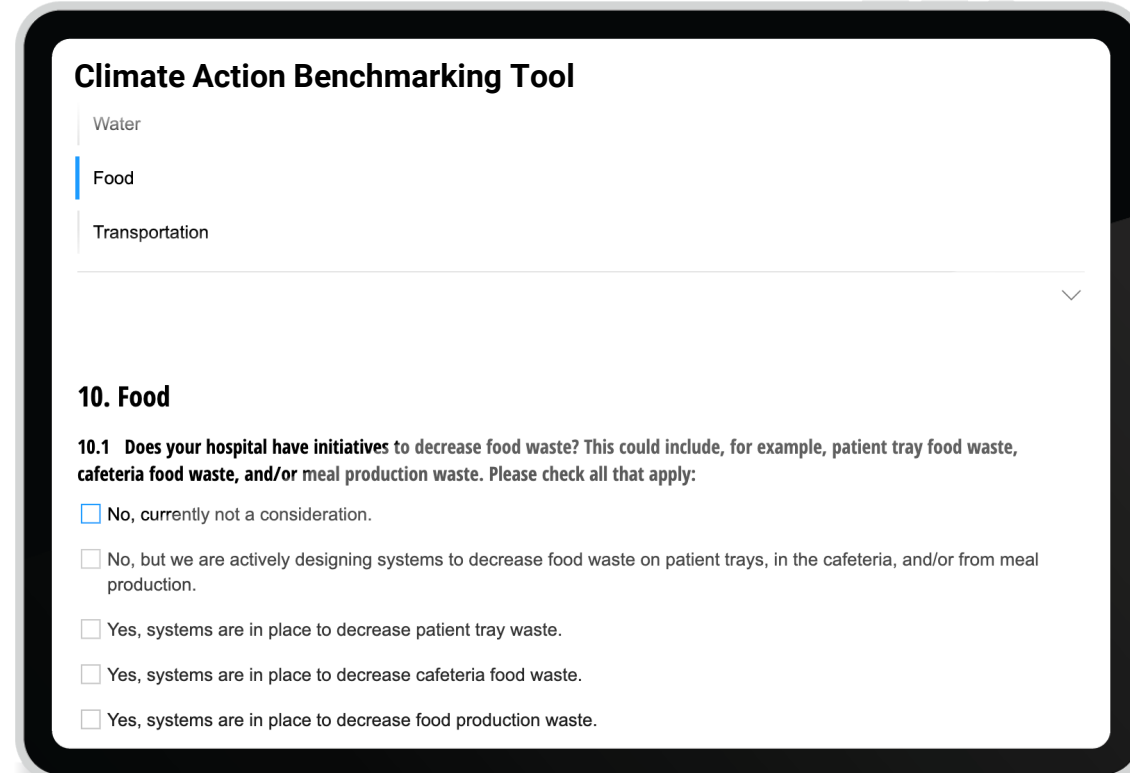
Resiliency



Climate Action Benchmarking Tool | Example

Updated Green Hospital Scorecard: Sections

1. Corporate Leadership and Governance (7 the Qs)
2. Climate Change and Resiliency (5 Qs)
3. Education (2 Qs)
4. Supply Chain (2 Qs)
5. Clinical Practices (8 Qs)
6. Medications and Anesthetics (7 Qs)
7. Buildings – Energy, Waste, Water (12 Qs)
-  **8. Food (5 Qs)**
9. Transportation (2 Qs)
10. System Design (1 Q)



Climate Action Benchmarking Tool

Water

Food

Transportation

10. Food

10.1 Does your hospital have initiatives to decrease food waste? This could include, for example, patient tray food waste, cafeteria food waste, and/or meal production waste. Please check all that apply:

☐ No, currently not a consideration.

☐ No, but we are actively designing systems to decrease food waste on patient trays, in the cafeteria, and/or from meal production.

☐ Yes, systems are in place to decrease patient tray waste.

☐ Yes, systems are in place to decrease cafeteria food waste.

☐ Yes, systems are in place to decrease food production waste.



Food | Cool Food

Hamilton Health Sciences - Internal

Improvement 1: Environmental Impact of Retail & Inpatient Food Services

Food production is a significant contributor to climate change, accounting for ¼ of global greenhouse gas emissions.
– World Resources Institute


- In 2023, HHS took the **Cool Food Pledge**, a global initiative of the **World Resource Institute** and hosted in Canada by **Nourish Leadership**
- The **Cool Food Pledge** is a commitment to achieve a 25% reduction in food-related greenhouse gases by 2030.
- Nourish advocates that reductions can be achieved by:
 - Improving patient's meal consumption & decreasing wasted food;
 - Increasing plant-forward menu options;
 - Implementing values-based procurement to buy more local foods & create menus that are more appetizing & culturally appropriate.



Victoria Brzozowski
Environmental Management
Lead, Corporate Support Services



WORLD
RESOURCES
INSTITUTE



COOL FOOD*



Patient Safety



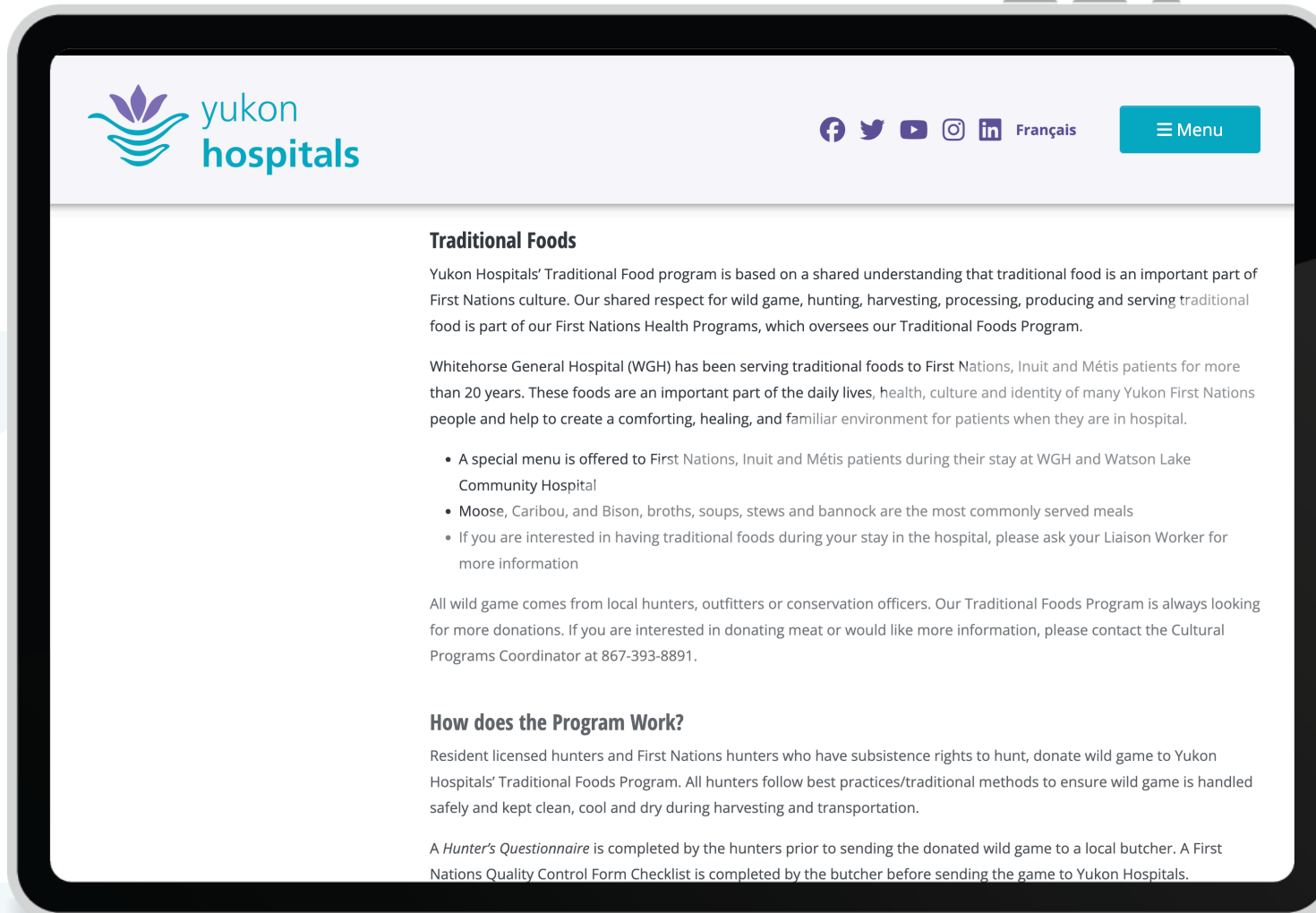
Cost Savings



Resiliency



Food | Yukon Hospitals



Patient Safety



Cost Savings




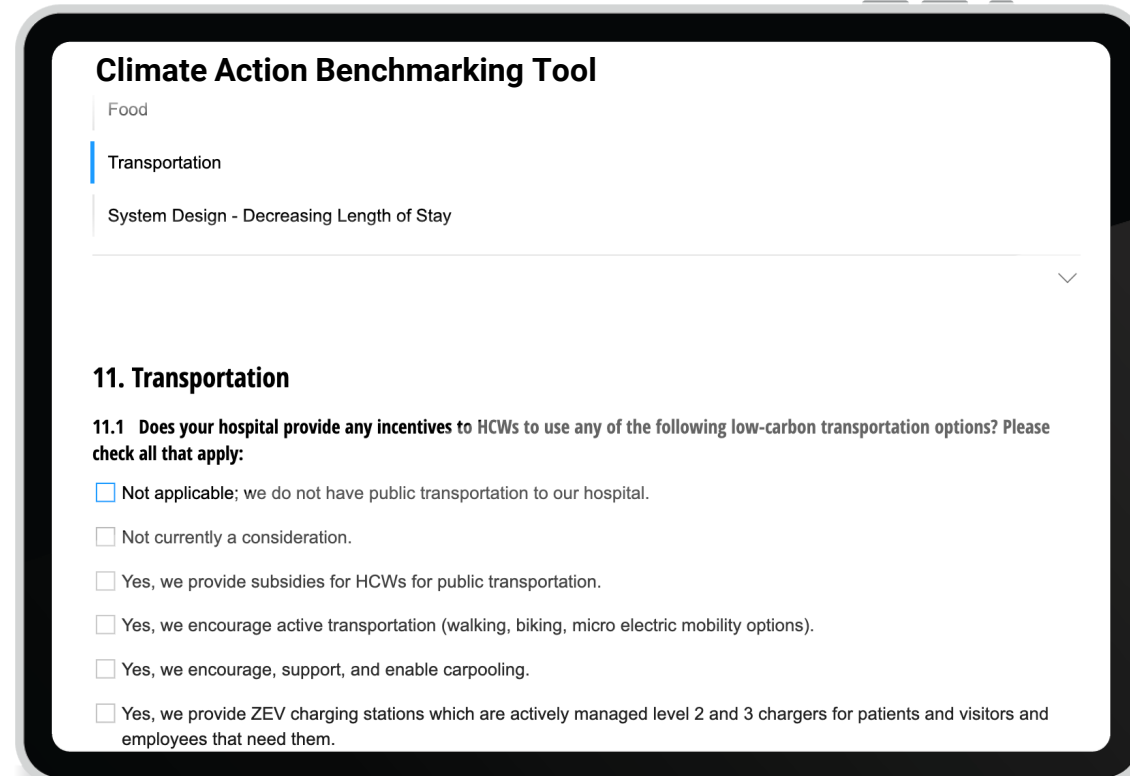
Resiliency



Climate Action Benchmarking Tool | Example

Updated Green Hospital Scorecard: Sections

1. Corporate Leadership and Governance (7 the Qs)
2. Climate Change and Resiliency (5 Qs)
3. Education (2 Qs)
4. Supply Chain (2 Qs)
5. Clinical Practices (8 Qs)
6. Medications and Anesthetics (7 Qs)
7. Buildings – Energy, Waste, Water (12 Qs)
8. Food (5 Qs)
-  **9. Transportation (2 Qs)**
10. System Design (1 Q)



Climate Action Benchmarking Tool

Food

Transportation

System Design - Decreasing Length of Stay

11. Transportation

11.1 Does your hospital provide any incentives to HCWs to use any of the following low-carbon transportation options? Please check all that apply:

☐ Not applicable; we do not have public transportation to our hospital.

☐ Not currently a consideration.

☐ Yes, we provide subsidies for HCWs for public transportation.

☐ Yes, we encourage active transportation (walking, biking, micro electric mobility options).

☐ Yes, we encourage, support, and enable carpooling.

☐ Yes, we provide ZEV charging stations which are actively managed level 2 and 3 chargers for patients and visitors and employees that need them.



Transportation | Yukon Home Care Program

BPMM in Health Care Delivery

- **Yukon Home Care Program** - provides a multitude of territory-wide services such as care coordination, home support, occupational therapy, and nursing
- Service delivery is made possible, in part, thanks to **two electric bicycles**
- Meeting organizational goals for staff health and reduced emissions
- Assisted by financial incentives for alternative forms of transportation and mobility
- Home Care has now traveled **845 kms** in the past 2 years via E-bike → **Saving 210 kg of CO2 emission**



Learn more: <https://greenhealthcare.ca/wp-content/uploads/2023/11/EN-FINAL-Micro-Mobility-Case-Study-1.pdf>



Patient Safety



Cost Savings



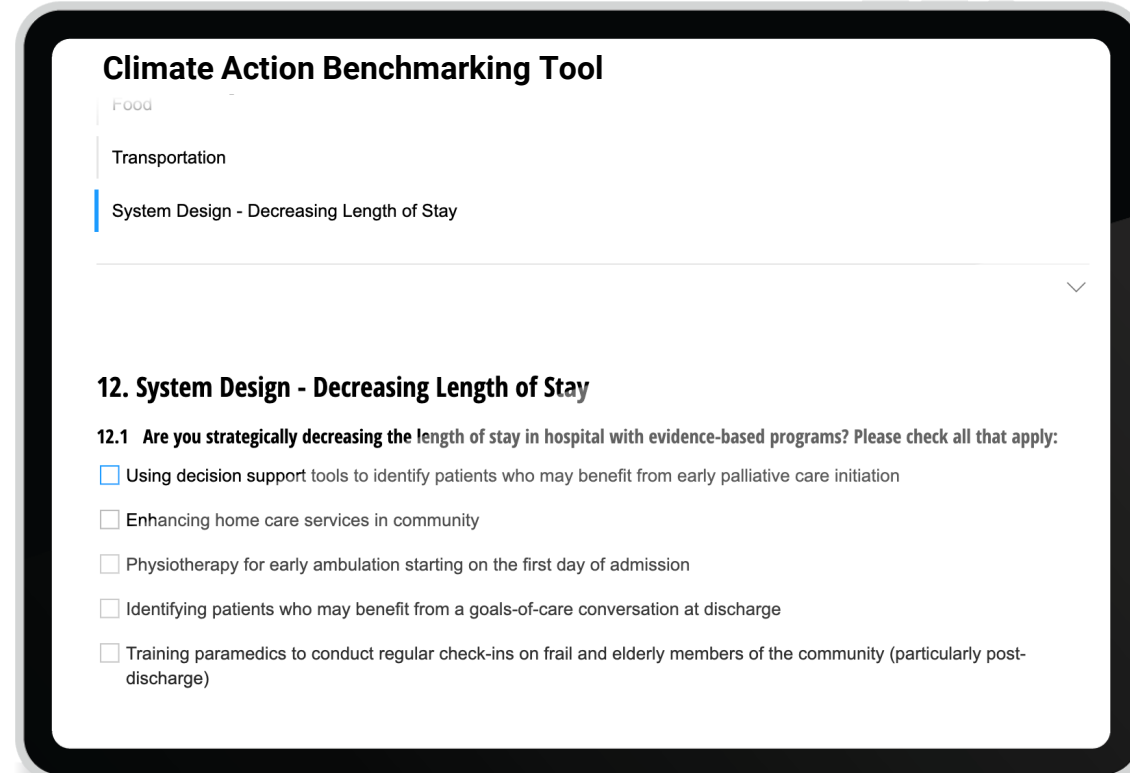
Resiliency



Climate Action Benchmarking Tool | System Design

Updated Green Hospital Scorecard: Sections

1. Corporate Leadership and Governance (7 the Qs)
2. Climate Change and Resiliency (5 Qs)
3. Education (2 Qs)
4. Supply Chain (2 Qs)
5. Clinical Practices (8 Qs)
6. Medications and Anesthetics (7 Qs)
7. Buildings – Energy, Waste, Water (12 Qs)
8. Food (5 Qs)
9. Transportation (2 Qs)
- 10. System Design (1 Q)



The screenshot displays the 'Climate Action Benchmarking Tool' interface. On the left, a sidebar lists categories: Food, Transportation, and System Design - Decreasing Length of Stay, which is currently selected and highlighted with a blue bar. The main content area shows the title '12. System Design - Decreasing Length of Stay' followed by a sub-question: '12.1 Are you strategically decreasing the length of stay in hospital with evidence-based programs? Please check all that apply:'. Below this, there are five checkboxes, each with a corresponding text description of a strategy.

Climate Action Benchmarking Tool

Food

Transportation

System Design - Decreasing Length of Stay

12. System Design - Decreasing Length of Stay

12.1 Are you strategically decreasing the length of stay in hospital with evidence-based programs? Please check all that apply:

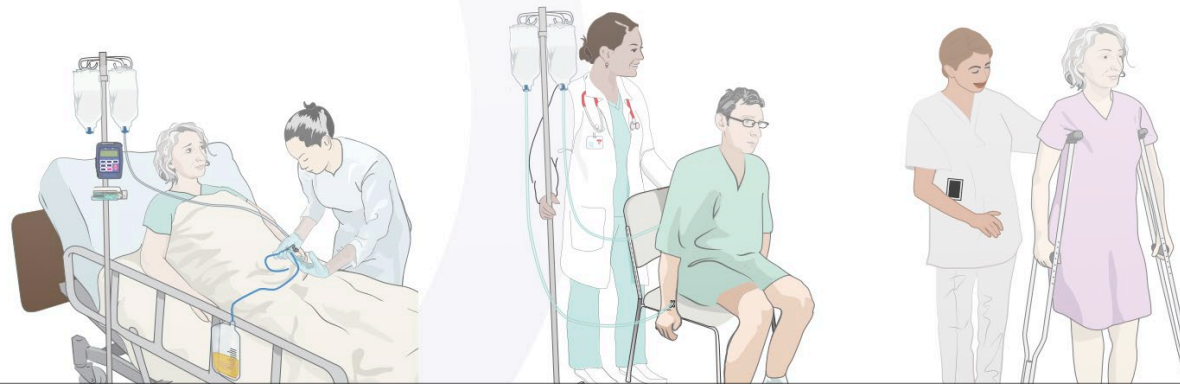
- ☐ Using decision support tools to identify patients who may benefit from early palliative care initiation
- ☐ Enhancing home care services in community
- ☐ Physiotherapy for early ambulation starting on the first day of admission
- ☐ Identifying patients who may benefit from a goals-of-care conversation at discharge
- ☐ Training paramedics to conduct regular check-ins on frail and elderly members of the community (particularly post-discharge)



Design System | Enhanced Recovery Canada

Clinical Pathway for Inpatient and Outpatient Hip and Knee Arthroplasty

Enhanced Recovery Canada:
A Collaborative to Improve Surgical Care



Patient Safety



Cost Savings



Resiliency

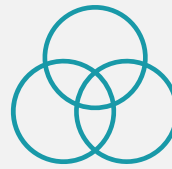


Climate Action Benchmarking Tool | Benchmarking



Overview

The scorecard provides you with an overview of where you are at in your green journey



Compare

Use the benchmarking tool to compare where you are to other health systems



Examine

Use the tool to examine your year over year progress





From these examples, which practice can you see making the biggest impact in your organization?



What is your biggest challenge when addressing climate action in your organization?



**How would you rate your
organization's effort towards
addressing climate issues?**



How familiar are you with the Green Hospital Scorecard?



What tools does your organization use to monitor its climate initiatives?



**What benefits can you see from using the
Climate Action Benchmarking Tool in your
organization?**



**What would deter you from using the
Climate Action Benchmarking Tool in
your organization?**



Breakout Session | 30 Minutes

10 Minutes | Group Work

20 Minutes | Present Findings

1. In groups, discuss ways in which the tool can drive climate action change from a:
 1. Leadership level
 2. Direct care level
2. Present your findings to the rest of the room



Climate Action Benchmarking Tool | Sections

Corporate Leadership and Governance

EXAMPLE

- Centre hospitalier de l'Université de Montréal

Climate Change and Resiliency

EXAMPLE

- Newfoundland and Labrador
- Fraser Health

Education

EXAMPLE

- Green Care

Supply Chain

EXAMPLE

- Hamilton Health Sciences

Clinical Practices

EXAMPLE

- Alberta Health Services
- Using Labs Wisely

Medication and Anesthetics

EXAMPLE

- Northwest Territories Health System

Buildings (Energy, Water, Waste)

EXAMPLE

- St. Joseph's Healthcare Hamilton

Food

EXAMPLE

- Cool Food
- Yukon Hospitals

Transportation

EXAMPLE

- Yukon Home Care Program

System Design

EXAMPLE

- Enhanced Recovery Canada



Climate Action Benchmarking Tool | Next Steps



User Testing

Begin with a user testing orientation and conduct bi-weekly support sessions throughout testing phase



Share the Reports

Including feedback from the pilot launch of the tool



Release Data Findings

On International Climate Action Day October 24, 2025



Questions | We Want to Hear From You!



Dr. John McGraw

Executive Vice President,
Products and Strategic Offerings

HSO & Accreditation Canada



Dr. Myles Sergeant

Executive Director, Canadian Coalition for Green
Health Care

Department of Family Medicine, McMaster University

Co-lead, PEACH Health Ontario



Dr. Maya Kalogirou

President,
Canadian Association of Nurses
for the Environment



Email us with questions, feedback, or
interest in participating in shaping the tool



Thank You

Reach out if you have questions:
climateaction@healthstandards.org

Connect with us



ACCREDITATION
AGRÉMENT
CANADA



Copyright © 2025 HSO and its licensors. All rights reserved.